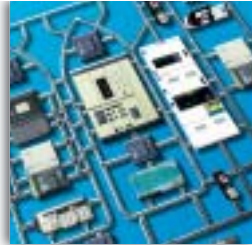


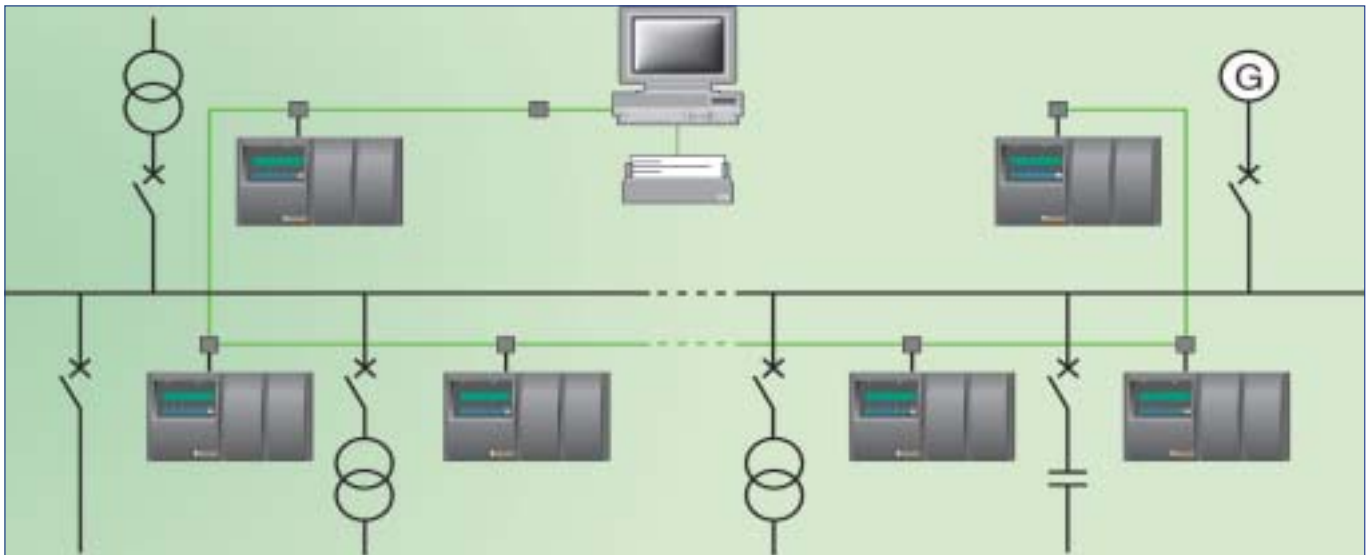
Merchant Marine

Dedicated offerings :

MCset Medium Voltage Switchboard



Benefit from an expert on board :
MCset Merlin Gerin series for marine
is a complete range of metalclad
MV switchboard (up to 17,5 kV)



Advantages

Marine MCset combines the advantages of a modular structure and a withdrawable prefabricated design and ensures :

- people's safety and equipment's security,
- easy installation,
- easy and rapid maintenance,
- easy to extend and adapt.

MCset series, thanks to its technology, meet the requirements of electrical performances and high security and is perfectly adapted to Marine environment, where continuity of service is essential.





Protection and control

The constantly increasing complexity of the installations and the importance of financial consequences due to an accidental stop during operations impose outstanding and reliable control and command systems.

The **Sepam 2000** multifunctional unit meets these criteria thanks to its permanent auto-control. It gives an immediate diagnosis in case of dysfunction. Therefore maintenance operations are reduced, and installations availability is increased.

Sepam 2000 realizes every functions such as : protection, command, measurement, basis automatism (load shedding, reclosing, automatic transfer), indication, communication and self-control.

Due to large communication capabilities, Sepam 2000 can be integrated perfectly in a supervision system.

With a simple parameter change, Sepam 2000 fits to all voltages and currents.



Features

Marine MCset is a range of modular functional units, each one dedicated to a specific application

Each unit includes :

- a metalclad cubicle, composed of several metallic compartments,
- a withdrawable breaking device (circuit-breaker, contactor-fuses),
- a dedicated protection and control unit.

MV switchboards ensure the following functions :

- electrical distribution,
- transformers power supply,
- generating set coupling,
- engine power supply.

MV switchgear :

- SF6, Rollarc contactors,
- SF6, LF circuit-breakers.

Easy installation

Several assembling solutions meet all Marine requirements and lay out or location constraints.

- Ground surface savings : reduced width cubicles without rear access
- Easy front access to busbars and cables connexions
- Easy on site extension
- Standardized ground bolting
- Easy integration of protection units

Management security :

- comply with IEC 298 for arc withstand,
- simple and reliable locking systems,
- making capacity earthing switch,
- connecting / withdrawable operations only allowed with closed door,
- front voltage indicator,
- front access to operating mechanisms and to cable connexions.

Quality

Insurance-Reliability

Designed in conformity with ISO 9001 procedures and EN 29001 standards.

Standards compliance

- CEI 298-695
- CEI 56 (for circuit-breakers)
- and : LRS, DNV, BV, RINA, ABS