

Hotel

Electrical supply for the Sheraton Club des Pins - Algiers

Société Hôtelière d'Investissements - SIH

Algeria



Sheraton Club des Pins

Located close by the magnificent 'Plage des Pins' beach, to the east of Algiers, the first Sheraton hotel in Algeria is a wonderful 8-floor building with 407 rooms, ultra modern conference halls, sports halls, shops, etc. Its construction is part of a 5-hotel programme to improve the Algerian infrastructure to allow tourist development.

The "Société Hôtelière d'Investissements - SIH" (Hotel Investment Company), created especially for this project, is responsible for the development of all the Sheraton hotels in Algeria. The consulting engineers coordinated this project between the customer (SIH) and the building contractor (the Chinese National Construction Company - CSCEC). CSCEC, a civil engineering specialist, has been established in Algeria for five years and has had a presence there for around twenty years.



Schneider Electric's services

Schneider Electric was chosen as the sole contact for the supply of the equipment for the Algiers Sheraton's electrical network: medium voltage, low voltage, transformers and control and monitoring.

The customer's objective was to have the first Sheraton hotel in Algeria up and running in 18 months, ready for the Organisation of African Unity summit (OAU) in 1999.

The work carried out to have Schneider Electric equipment specified, and the approach of the Projects & Systems department, in both France and Algeria, meant that we were able to support and assist the customer in the development period.

The reliability of our equipment, the technical assistance provided during the installation's design and the respect for delivery dates were all key factors in the success of this project.





Technical description of the solution

The task was to create an electrical network consisting of a 30 kV consumer substation and a 30 kV medium voltage open ring with two substations.

■ Equipment supplied

- 24 x F400 cubicles fitted with Sepam 2000 digital protection,
- 4 x MV/LV Trihal transformers (2x1250 kVA and 2x1600 kVA).
- high current busway,
- 4 x MB400 MLVSS,
- 180 sub-distribution panels,
- 480 consumer units,

■ 1 control system for the entire medium and low voltage electrical network providing the following functions:

- switching of the network from normal to standby supply should the main Sonelgaz supply be lost,
- loadshedding of non-priority zones and start-up of backup generators in the event of excess consumption.

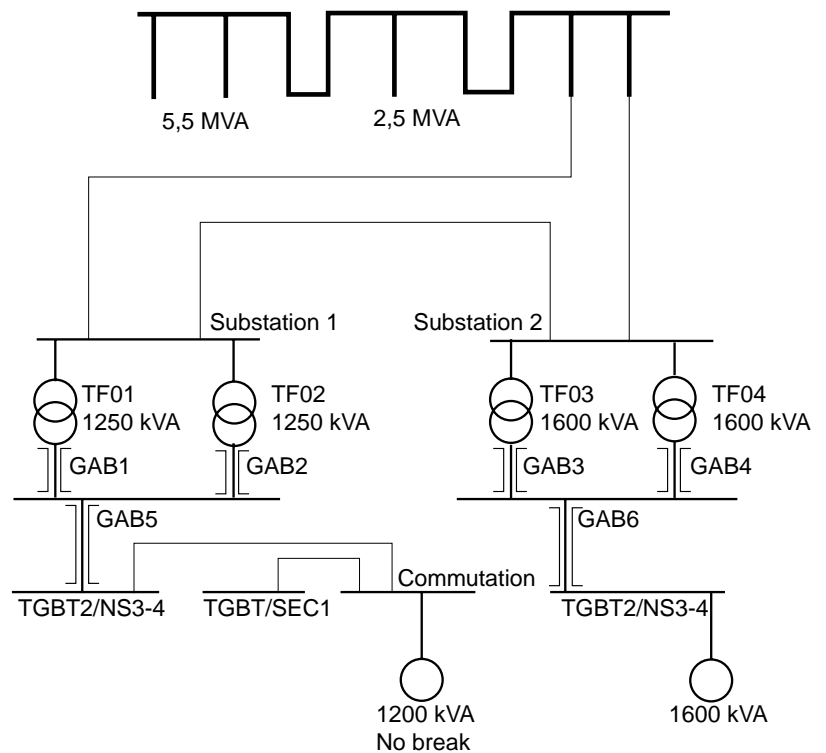
■ Site commissioning and supervision

■ Studies

- general single line diagram,
- short-circuit current calculations,
- coordination of civil engineering guide plans.



Standard architecture of the electrical installation



Other references

- Oran Sheraton
- Oran Military Hospital
- Constantine Military Hospital
- Oran Teaching Hospital


2003
2003
2003
2003

Schneider Electric Industries SAS

Postal address
Projects & Engineering Center
F-38050 Grenoble Cedex 9
Tél. : 33 (0)4 76 57 60 60
<http://www.schneider-electric.com>

As standards, specifications and designs develop from time to time, always ask for confirmation of the information given in this publication.

Production and design: Schneider Electric
Pictures: Schneider Electric
Printing:

 This document has been printed on recycled paper